



*Welcome to  
Year 1  
Dragon Class*

# Year 1 Staff

## Teacher

Mr Davies

## Teaching Assistants

Mrs Lucas

Miss Sharkey

Miss Walton

## Daily Routine

School Day 8.45am-3.15pm (doors close at 8.55am)

Morning playtime— 10.20am-10.30am

Lunchtime 11.30am-12.30pm

Please try to arrive on time and be prompt collecting your child. Remember to inform us if your child is absent or if someone else is collecting your child from school.



## Snack

Fruit is provided daily.



Please provide your child with a named water bottle (we will refill these each day)

Milk maybe be purchased at a cost of 20p per day.

You do not need to send any other food and drink into school.

## Lunchtime



Children are encouraged to eat a hot dinner but also have the option of a sandwich or jacket potato. If you have concerns about what your child is choosing/eating please pre order from the office.

## Tuck Shop

Tuck shop is on Fridays after school



## PE

Year 1 PE is on a **Wednesday**



They will need the school PE kit of a white T-shirt and maroon shorts and pumps or trainers. PE kits to be left in school, they can go home at the end of each half term to be washed.

## Bookbags/Spellings



Y1 Homework will be given out on a Thursday and should be returned on a Wednesday

Homework includes:

One/two reading books

Words to learn to read /spell (the children will be tested on their spellings on a Wednesday)

Maths activities—occasionally

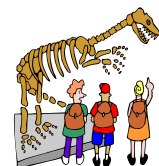
Termly Learning Challenge Homework

**Please hear your child read as often as possible 5 to 10 minutes every day is recommended.**

## Learning Challenges

Year 1 learning Challenge questions will be sent out at the beginning of each term and placed on the school website.

**If you have any questions about homework or learning challenges, please ask your child's teacher or teaching assistant.**



## School Trips/Events

Throughout the year class outings are organised, visitors are invited into school, shows and workshops are organised.

Possible school trip

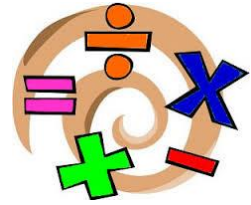
Trip to Chester zoo

Trip to Norton Priory to look at Victorian toys

Trip to Southport pier/Formby woods

# Year 1 Curriculum

## Maths (How to help at home)



- Count to 100 forwards and backwards starting from any number.
- Say 1 more than and 1 less than of numbers to 100
- Count in 2s, 5, 10s forwards and backwards
- Know all numbers that add up to 20

## Reading



- To know all RWI sounds and blend them
- to read unfamiliar words
- To read most of the high frequency words on the word lists in their reading books
- To talk about stories and characters and answer questions about them

## Writing



- Spell words with RWI sounds correctly
- Spell common red words e.g.- was
- Write sentences by saying a sentence before writing it and be able to read it back
- Write a sequence of sentences

## Good to Green / Bucket Filler

Year 1 follow the good to green and bucket filler systems for managing behaviour. We also award dojos, team points, stickers, class tickets for good behaviour and hard work. Children are awarded star of the week, achievement awards, bucket filler awards and attendance awards throughout the year. If your child misbehaves they will receive quiet warnings, a yellow card then a red card.



If you have any questions or concerns, please come in and speak to a member of staff. We are often available to speak after school or you can make an appointment at the office.

For more information lookout for texts, tweets, newsletters or go to our website [www.thomasgrayprimary.co.uk](http://www.thomasgrayprimary.co.uk)

Also check out our SEESAW Page - Ask a member of staff for your parent QR Codes!

